

## SEMINARS & WORKSHOPS

In our 70m<sup>2</sup> spacious seminar room, all possibilities are open to you – from productive meetings to creative workshops.

Urban style combined with modern technic provides the best conditions for your event.

We are happy to assist you with the organization.

- High-speed WLAN
- 2x Whiteboard
- 2x Pinboard
- Sound system
- Projector with screen
- Table soccer
- Writing pads & pens

Thinking requires energy. Upon request, we can provide you with the right power kick during breaks, with freshly brewed coffee and refreshing snacks.



### ROOM RENTAL

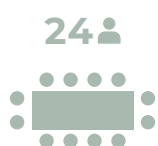
Included are a coffee machine, tea station, water, and fruits.

**Half-day** CHF 300,  
up to 4 hours

**Full-day** CHF 450,  
up to 9 hours



## SEATING ARRANGEMENTS



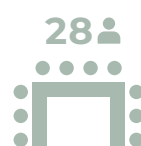
Block



Oval



Parliamentary



U-shaped



Chair rows



Standing reception

## LUNCH AND DINNER

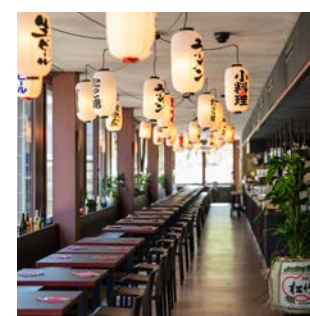
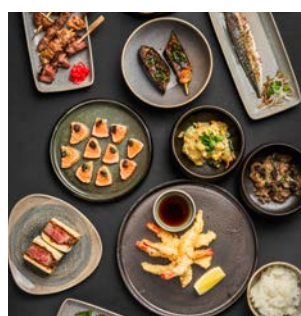
The Izakaya Ekimae brings traditional Japanese cuisine directly to St. Gallen. No sushi, but everything else that is typically found on the tables in the Land of the Rising Sun. Authentically, puristically, and with incredible taste, we take you on a direct journey to Kyoto, Osaka, or Tokyo.

### LUNCH

Business lunch starting from CHF 23.50 per person.

### DINNER

Ekimae Experience, a culinary journey across our menu. CHF 78 per person.



For your tailor-made offer:

**Tailormade Hotel LEO St.Gallen**  
Grünbergstrasse 6 | 9000 St.Gallen  
+41 71 274 09 79  
leo@tailormade-hotels.com  
www.tailormade-hotels.com/leo